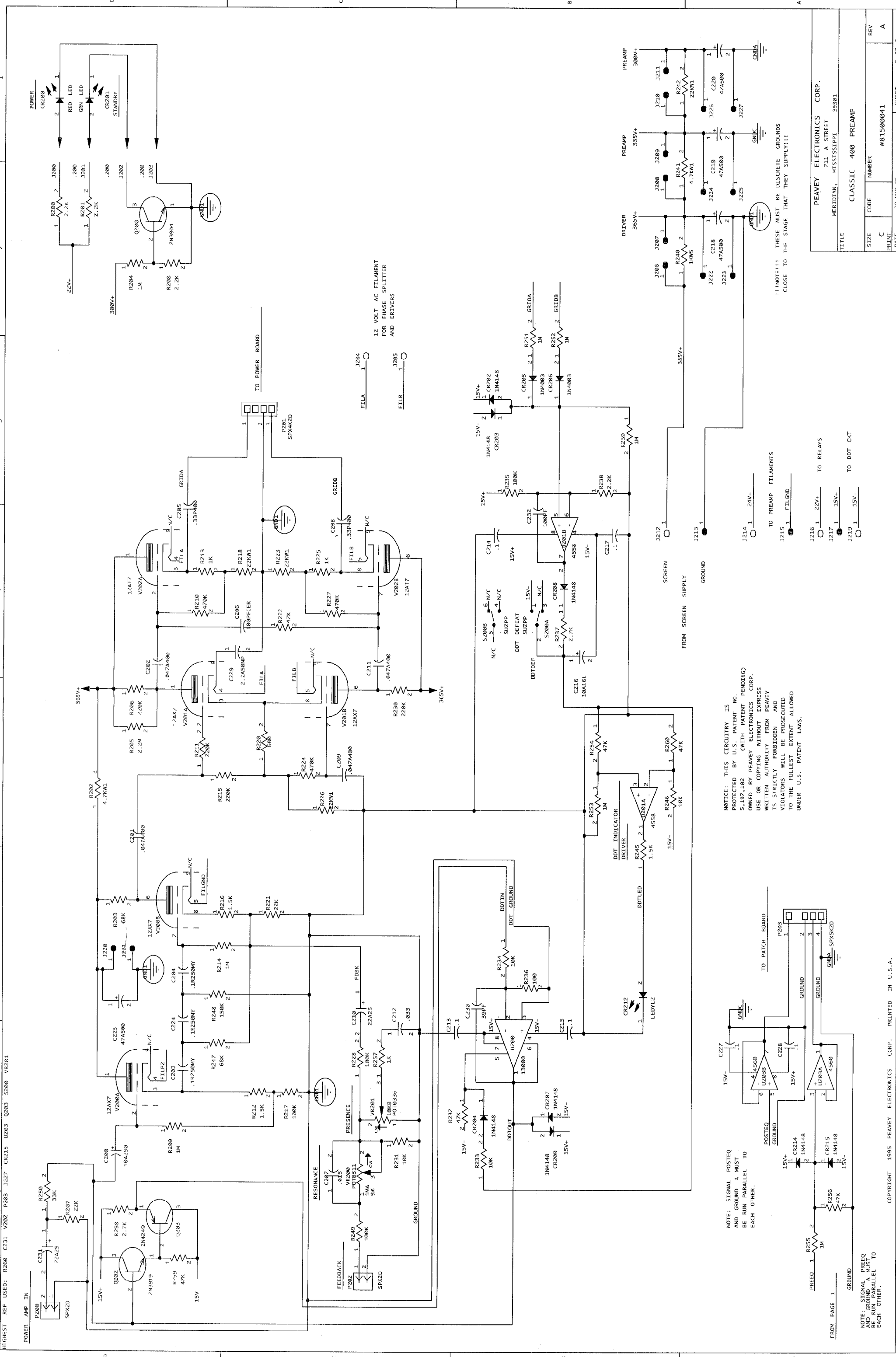


NOTICE: THIS CIRCUITRY IS PROTECTED BY U.S. PATENT NO. 5,197,102 (WITH PATENT PENDING) OWNED BY PEAVEY ELECTRONICS CORP. USE OR COPYING WITHOUT EXPRESS WRITTEN AUTHORITY FROM PEAVEY IS STRICTLY FORBIDDEN AND VIOLATORS WILL BE PROSECUTED TO THE FULLEST EXTENT ALLOWED UNDER U.S. PATENT LAWS.

PEAVEY ELECTRONICS CORP.	
TITLE MERIDIAN, MISSISSIPPI 39301	
SIZE C	NUMBER #81500041
PRINT DATE 29-MAY-96	REV A
SHEET 1 OF 3	

NOTE HIGHEST REF R168 C148 J100 CR104 S108 K102 P102 VR108 Q102

COPYRIGHT 1995 PEAVEY ELECTRONICS CORP. PRINTED IN U.S.A.



HIGHEST REF USED: R260 C231 V202 J227 CR215 U203 S200 VR201

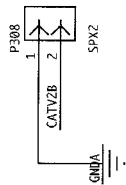
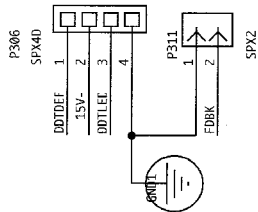
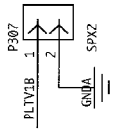
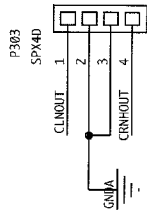
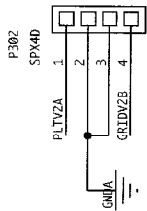
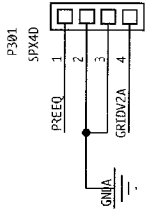
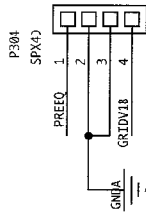
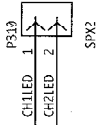
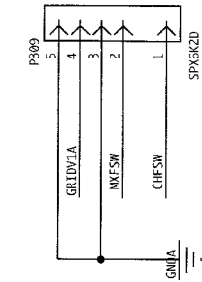
NOTICE: THIS CIRCUITRY IS PROTECTED BY U.S. PATENT NO. 5,197,102 OWNED BY PEAVEY ELECTRONICS CORP. WRITTEN AUTHORITY WITHOUT EXPRESS IS STRICTLY FORBIDDEN AND VIOLATORS WILL BE PROSECUTED TO THE FULLEST EXTENT ALLOWED UNDER U.S. PATENT LAWS.

NOTE: SIGNAL POSTEQ AND GROUND A MUST BE RIN PARALLEL TO EACH OTHER.

!!!NOTE!!! THESE MUST BE DISCRETE GROUNDS CLOSE TO THE STAGE THAT THEY SUPPLY!!!

NOTE: SIGNAL PREEQ AND GROUND A MUST BE RIN PARALLEL TO EACH OTHER.

PEAVEY ELECTRONICS CORP.			
711 A STREET			
MERIDIAN, MISSISSIPPI 39301			
CLASSIC 400 PREAMP			
SIZE	CODE	NUMBER	REV
C		#81500041	A
PRINT			
DATE			

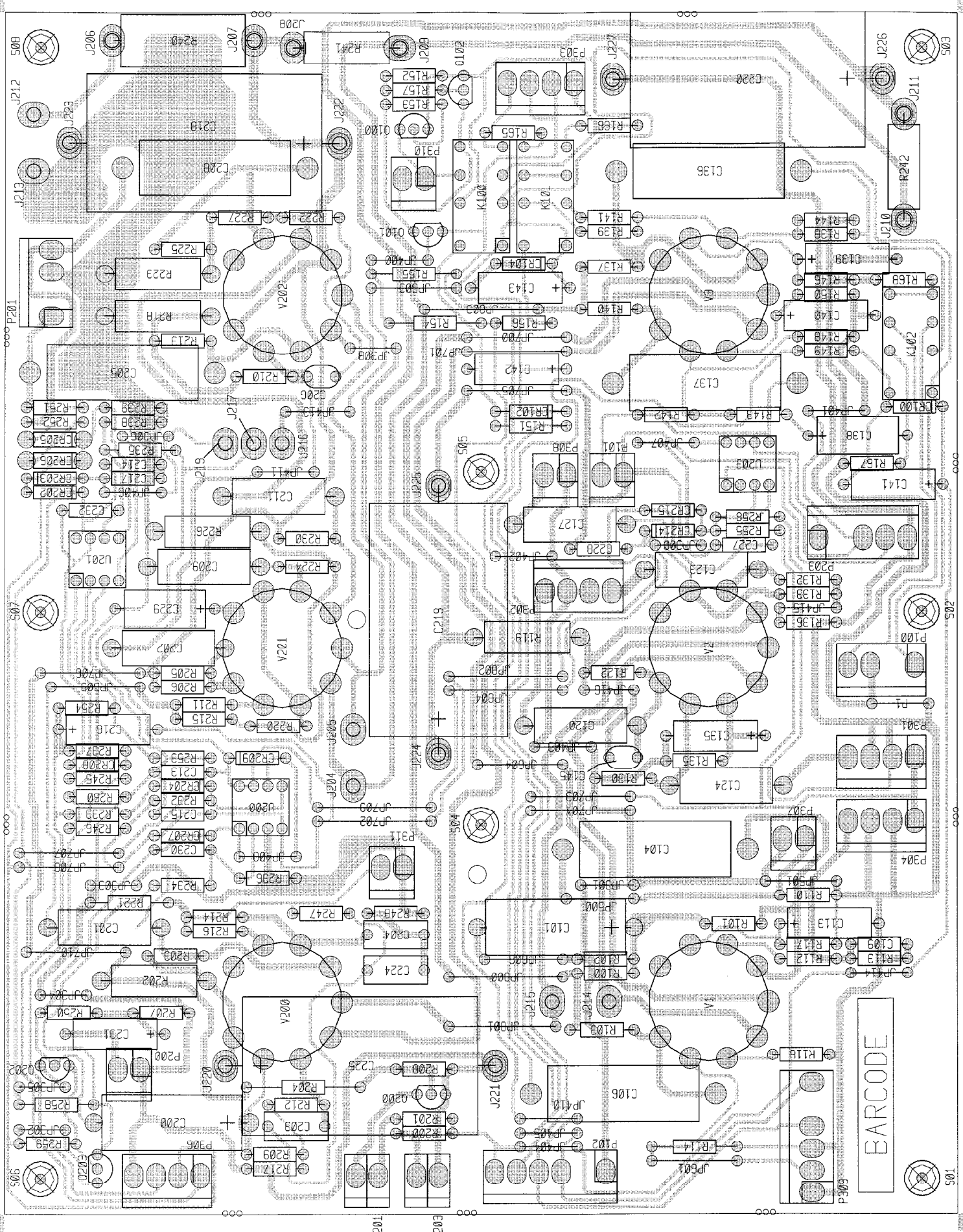


NOTICE: THIS CIRCUITRY IS
PROTECTED BY U.S. PATENT NO.
5,197,102 (WITH PATENT PENDING)
OWNED BY PEAVEY ELECTRONICS CORP.
USE OR COPYING WITHOUT EXPRESS
WRITTEN AUTHORITY FROM PEAVEY
IS STRICTLY FORBIDDEN AND
VIOLATORS WILL BE PROSECUTED
TO THE FULLEST EXTENT ALLOWED
UNDER U.S. PATENT LAWS.

PEAVEY ELECTRONICS CORP.
711 A STREET
MERIDIAN, MISSISSIPPI 39301

TITLE
CLASSIC 400 INTERCONNECTS

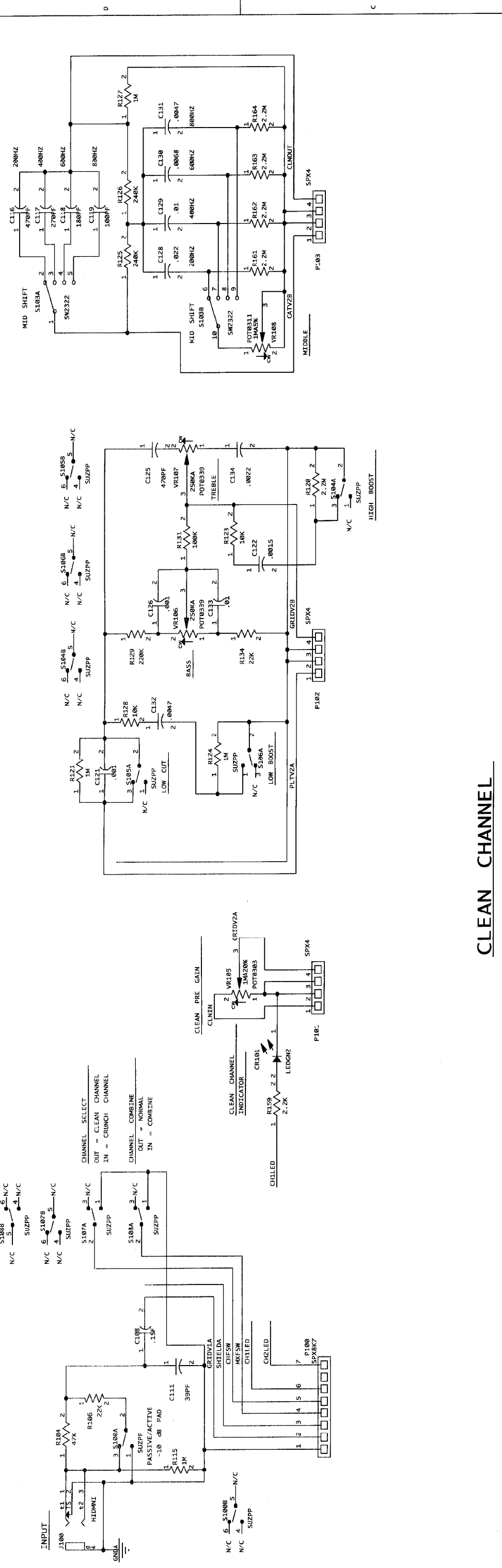
SIZE B	CODE NUMBER	REV A
PRINT	#81500041	
DATE	29-MAY-96	SHEET 3 OF 3



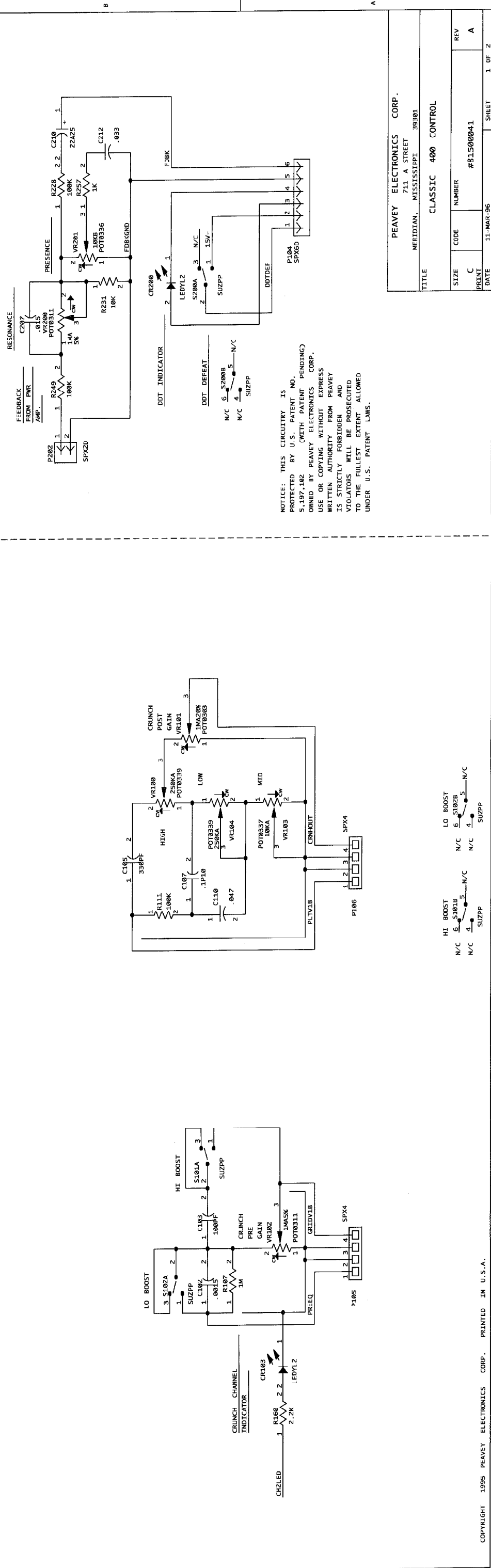
Classic 400 Preamp

BARCODE

QTY.	NAME	VALUE	PART	BOARD NAME:	CL400	FREAMP	DESCRIPTION AND DEVICE DESIGNATIONS	1	SPX2D	SPX2D	SPX2D	XXXXXXX	2 EACH OF STAKE PINS	1	220K	220K	70240036	220K-1/4W-5%-CF-T&R
1	10A250	10A250	70320156	10 MF--20%--250VDC-EL-AXL	1	SPX2D	XXXXXXX	1	SPX2D	SPX2D	SPX2D	XXXXXXX	2 EACH OF STAKE PINS	1	22K	22K	70240019	22K-1/4W-5%-CF-T&R
2	33P400	33P400	70320235	.33MFD-400V-AXIAL-POLY-CAP	1	SPX4K2D	XXXXXXX	1	SPX4K2D	SPX4K2D	SPX4K2D	XXXXXXX	3 EACH OF STAKE PINS	1	1M	1M	70240039	1M--1/4W-5%-CF-T&R
1	270PF	270PF	70340057	270PF-10%--50VDC-T/C-T&R	1	SPX5K2D	73717003	1	SPX5K2D	SPX5K2D	SPX5K2D	73717003	4 EACH OF STAKE PINS	1	470K	470K	70240038	470K-1/4W-5%-CF-T&R
1	22A25	22A25	70320012	22MFD +/-20% 25VDC EL AXL	5	SPX4D	XXXXXXX	1	SPX4D	SPX4D	SPX4D	XXXXXXX	4 EACH OF STAKE PINS	1	220K	220K	70240036	220K-1/4W-5%-CF-T&R
4	.047A400	.047A400	70320105	.047MFD 450 VOLT T&R CAP	2	SPX2	XXXXXXX	1	SPX2	SPX2	SPX2	XXXXXXX	2 EACH OF STAKE PINS	1	1.5K	1.5K	70240018	1.5K-1/4W-5%-CF-T&R
1	22A25	22A25	70320012	22MFD +/-20% 25VDC EL AXL	1	SPX6K2D	XXXXXXX	1	SPX6K2D	SPX6K2D	SPX6K2D	XXXXXXX	5 EACH OF STAKE PINS	1	1K	1K	70240017	1K--1/4W-5%-CF-T&R
2	33P400	33P400	70320285	.33MFD-400V-AXIAL-POLY-CAP	2	SPX2	XXXXXXX	1	SPX2	SPX2	SPX2	XXXXXXX	2 EACH OF STAKE PINS	1	1M	1M	70240039	1M--1/4W-5%-CF-T&R
1	2.2A50NP	2.2A50NP	70320010	2.2MFD 20% 50V NP EL T&R	4	2N5904	.0463504	1	2N5904	3904	3904	.0463504	3904/SFST239 TO 92 NPN	1	220K	220K	70240036	220K-1/4W-5%-CF-T&R
5	22A25	22A25	70320012	22MFD +/-20% 25VDC EL AXL	1	2N5919	.0463519	1	2N5919	3919	3919	.0463519	SKA-3919 TO92 NPN TRANS T&A	1	1.5K	1.5K	70240018	1.5K-1/4W-5%-CF-T&R
1	100PF CER	100PF CER	70320063	100PF 100VDC 25% 20%CD	1	2N4249	.0464249	1	2N4249	4249	4249	.0464249	2N4249/690 30V TO-92 PNP T&A	1	100K	100K	70240034	100K-1/4W-5%-CF-T&R
1	10A250	10A250	70320156	10 MF--20%--250VDC-EL-AXL	1	220K	.0240036	1	220K	220K	220K	.0240036	220K-1/4W-5%-CF-T&R	1	22KWI	22KWI	70210005	22K-1W-5%-MO-T&R
2	.047A400	.047A400	70320105	.047MFD 450 VOLT T&R CAP	1	100K	.0240034	1	100K	100K	100K	.0240034	100K-1/4W-5%-CF-T&R	1	680	680	70240016	680-1/4W-5%-CF-T&R
2	.1R250MY	.1R250MY	70320096	.1 MFD 250VDC MYLAR CA/BE	1	220K	.0240036	1	220K	220K	220K	.0240036	220K-1/4W-5%-CF-T&R	1	22K	22K	70240029	22K-1/4W-5%-CF-T&R
1	33P400	33P400	70320285	.33MFD-400V-AXIAL-POLY-CAP	1	100K	.0240034	1	100K	100K	100K	.0240034	100K-1/4W-5%-CF-T&R	1	47K	47K	70240031	47K-1/4W-5%-CF-T&R
1	100PF CER	100PF CER	70320063	100PF 100VDC 25% 20%CD	1	2.2M	.0240040	1	2.2M	2.2M	2.2M	.0240040	2.2K-1/4W-5%-CF-T&R	1	22KWI	22KWI	70210005	22K-1W-5%-MO-T&R
1	33P400	33P400	70320285	.33MFD-400V-AXIAL-POLY-CAP	1	100K	.0240034	1	100K	100K	100K	.0240034	100K-1/4W-5%-CF-T&R	1	470K	470K	70240038	470K-1/4W-5%-CF-T&R
2	.047A400	.047A400	70320105	.047MFD 450 VOLT T&R CAP	1	330K	.0240037	1	330K	330K	330K	.0240037	330K-1/4W-5%-CF-T&R	1	1K	1K	70240017	1K--1/4W-5%-CF-T&R
3	1	1	70340100	.1MFD-80-20%--50VDC-AXL-T&R	1	1M	.0240039	1	1M	1M	1M	.0240039	1M-1/4W-5%-CF-T&R	1	22KWI	22KWI	70210005	22K-1W-5%-MO-T&R
1	10A16L	10A16L	70320198	10MFD 16V LOW LEAKAGE T&R	2	1.5K	.0240018	1	1.5K	1.5K	1.5K	.0240018	1.5K-1/4W-5%-CF-T&R	1	470K	470K	70240038	470K-1/4W-5%-CF-T&R
1	1	1	70340100	.1MFD-80-20%--50VDC-AXL-T&R	1	4.7KWI	.0210006	1	4.7KWI	4.7KWI	4.7KWI	.0210006	4700-1W-5%-MO-T&R	1	220K	220K	70240036	220K-1/4W-5%-CF-T&R
3	47A500	47A500	70320005	47MF 500VDC ELECTROLYTIC -AXIAL	1	100K	.0240034	1	100K	100K	100K	.0240034	100K-1/4W-5%-CF-T&R	1	47K	47K	70240031	47K-1/4W-5%-CF-T&R
1	.1R250MY	.1R250MY	70320096	.1 MFD 250VDC MYLAR CA/BR	2	1M	.0240039	1	1M	1M	1M	.0240039	1M-1/4W-5%-CF-T&R	2	10K	10K	70240025	10K-1/4W-5%-CF-T&R
1	47A500	47A500	70320005	47MF 500VDC ELECTROLYTIC -AXIAL	2	1.5K	.0240018	1	1.5K	1.5K	1.5K	.0240018	1.5K-1/4W-5%-CF-T&R	1	100K	100K	70240034	100K-1/4W-5%-CF-T&R
2	1	1	70340100	.1MFD-80-20%--50VDC-AXL-T&R	2	100K	.0240034	1	100K	100K	100K	.0240034	100K-1/4W-5%-CF-T&R	1	100	100	70240010	100-1/4W-5%-CF-T&R
1	2.2A50NP	2.2A50NP	70320010	2.2MFD 20% 50V NP EL T&R	2	220K	.0240036	1	220K	220K	220K	.0240036	220K-1/4W-5%-CF-T&R	1	2.7K	2.7K	70240021	2.7K-1/4W-5%-CF-T&R
1	39PF	39PF	70340052	39PF-----50VDC-T/C-T&R	1	100K	.0240034	1	100K	100K	100K	.0240034	100K-1/4W-5%-CF-T&R	1	2.2K	2.2K	70240020	2.2K-1/4W-5%-CF-T&R
1	22A25	22A25	70320012	22MFD +/-20% 25VDC EL AXL	1	220K	.0240036	1	220K	220K	220K	.0240036	220K-1/4W-5%-CF-T&R	1	1M	1M	70240039	1M--1/4W-5%-CF-T&R
1	100PF	100PF	70340054	100PF-10%--50VDC-T/C-T&R	1	330K	.0240037	1	330K	330K	330K	.0240037	330K-1/4W-5%-CF-T&R	1	1KWI	1KWI	70250060	1K-5W-10%--MW-AXL
6	1N4148	4148	70464148	1N4148 75V 10MA SILICON DIODE	1	100K	.0240034	1	100K	100K	100K	.0240034	100K-1/4W-5%-CF-T&R	1	4.7KWI	4.7KWI	70210006	4700-1W-5%-MC-T&R
2	1N4003	1N4003	70464003	1N4003 200V SILICON DIODE	1	1M	.0240039	1	1M	1M	1M	.0240039	1M-1/4W-5%-CF-T&R	1	22KWI	22KWI	*70210005	22K-1W-5%-MO-T&R
5	1N4148	4148	70464148	1N4148 75V 10MA SILICON DIODE	1	1.5K	.0240018	1	1.5K	1.5K	1.5K	.0240018	1.5K-1/4W-5%-CF-T&R	1	1.5K	1.5K	70240018	1.5K-1/4W-5%-CF-T&R
4	SPX1D	SPX1D	73711811	1 STAKE PIN	1	1M	.0240039	1	1M	1M	1M	.0240039	1M-1/4W-5%-CF-T&R	1	10K	10K	70240025	10K-1/4W-5%-CF-T&R
2	FMFD	73711811	73711811	M118-171 C.B. FEMALE MOLEX PIN	1	560	.0240050	1	560	560	560	.0240050	560-1/4W-5%-CF-T&R	1	68K	68K	70240032	68K-1/4W-5%-CF-T&R
6	MMFD	73711812	73711812	R93-12 FN C.B. MALE MOLEX PIN	1	1.5K	.0240018	1	1.5K	1.5K	1.5K	.0240018	1.5K-1/4W-5%-CF-T&R	1	150K	150K	70240035	150K-1/4W-5%-CF-T&R
1	FMFD	73711811	73711811	M118-171 C.B. FEMALE MOLEX PIN	1	560	.0240050	1	560	560	560	.0240050	560-1/4W-5%-CF-T&R	1	33K	33K	70240030	33K-1/4W-5%-CF-T&R
1	MMPD	73711812	73711812	R93-12 FN C.B. MALE MOLEX PIN	3	15K	.0240027	1	15K	15K	15K	.0240027	15K-1/4W-5%-CF-T&R	3	1M	1M	70240039	1M--1/4W-5%-CF-T&R
1	FMFD	73711811	73711811	M118-171 C.B. FEMALE MOLEX PIN	1	1.5K	.0240018	1	1.5K	1.5K	1.5K	.0240018	1.5K-1/4W-5%-CF-T&R	1	47K	47K	70240031	47K-1/4W-5%-CF-T&R
1	MMPD	73711812	73711812	R93-12 FN C.B. MALE MOLEX PIN	1	560	.0240050	1	560	560	560	.0240050	560-1/4W-5%-CF-T&R	1	1M	1M	70240039	1M--1/4W-5%-CF-T&R
1	FMFD	73711811	73711811	M118-171 C.B. FEMALE MOLEX PIN	1	15K	.0240027	1	15K	15K	15K	.0240027	15K-1/4W-5%-CF-T&R	1	47K	47K	70240031	47K-1/4W-5%-CF-T&R
1	MMPD	73711812	73711812	R93-12 FN C.B. MALE MOLEX PIN	2	150K	.0240035	1	150K	150K	150K	.0240035	150K-1/4W-5%-CF-T&R	1	2.7K	2.7K	70240021	2.7K-1/4W-5%-CF-T&R
1	FMFD	73711811	73711811	M118-171 C.B. FEMALE MOLEX PIN	2	1M	.0240039	1	1M	1M	1M	.0240039	1M-1/4W-5%-CF-T&R	2	47K	47K	70240031	47K-1/4W-5%-CF-T&R
8	MMPD	73711812	73711812	R93-12 FN C.B. MALE MOLEX PIN	2	2.2K	.0240020	1	2.2K	2.2K	2.2K	.0240020	2.2K-1/4W-5%-CF-T&R	8	500SOKU	70900781	70900781	SPACER, 1/2,R(H4),.187 SWAGE ADJ.M.
3	12V RELAY	71322277	71322277	DPDT OMRON RELAY 12VDC	1	4.7KWI	.0210006	1	4.7KWI	4.7KWI	4.7KWI	.0210006	4700-1W-5%-MO-T&R	1	13080	13080	70413080	LM3080N CUSTOM SELECTED
1	JMP	JMP	70600005	22 GA. JUMPER WIRE T&R	1	68K	.0240032	1	68K	68K	68K	.0240032	68K-1/4W-5%-CF-T&R	1	4558	4558	70404558	IC RC-4558, P LUAL BL-PKG 10
1	SPX4K2D	SPX4K2D	XXXXXXX	3 EACH OF STAKE PINS	1	1M	.0240039	1	1M	1M	1M	.0240039	1M-1/4W-5%-CF-T&R	1	4560	4560	70414560	U201
					1	2.2M	.0240040	1	2.2M	2.2M	2.2M	.0240040	2.2M-1/4W-5%-CF-T&R	1			U203	

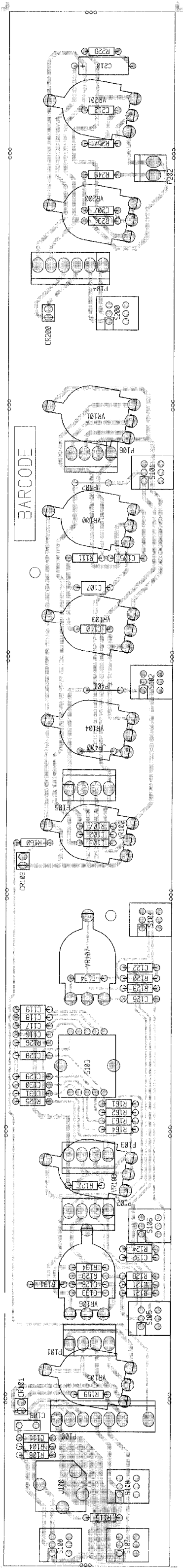


CLEAN CHANNEL
CRUNCH CHANNEL



NOTICE: THIS CIRCUITRY IS PROTECTED BY U.S. PATENT NO. 5,197,182 (WITH PATENT PENDING) OWNED BY PEAVEY ELECTRONICS CORP. USE OR COPYING WITHOUT EXPRESS WRITTEN AUTHORITY FROM PEAVEY IS STRICTLY FORBIDDEN AND VIOLATORS WILL BE PROSECUTED TO THE FULLEST EXTENT ALLOWED UNDER U.S. PATENT LAWS.

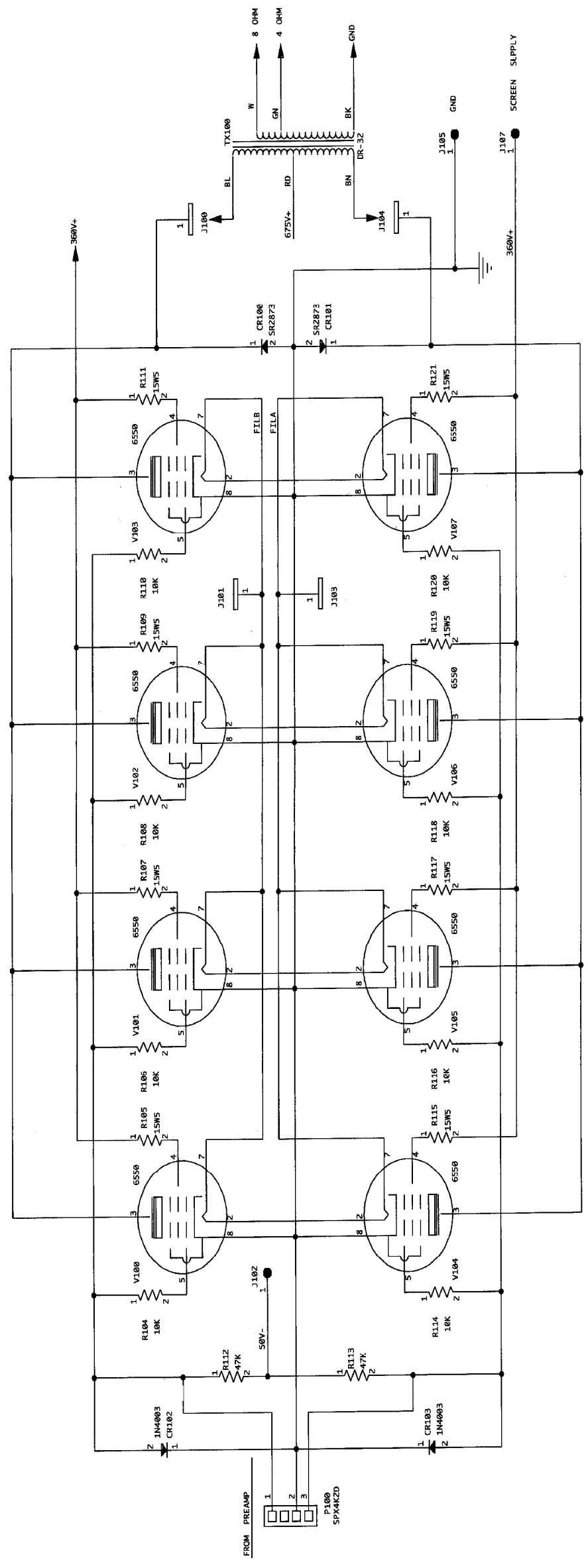
PEAVEY ELECTRONICS CORP.			
711 A STREET			
MERIDIAN, MISSISSIPPI 39301			
TITLE CLASSIC 400 CONTROL			
SIZE	CODE	NUMBER	REV
C		#8150041	A
DATE	11-MAR-96	SHEET	1 OF 2



Classic 400 Control

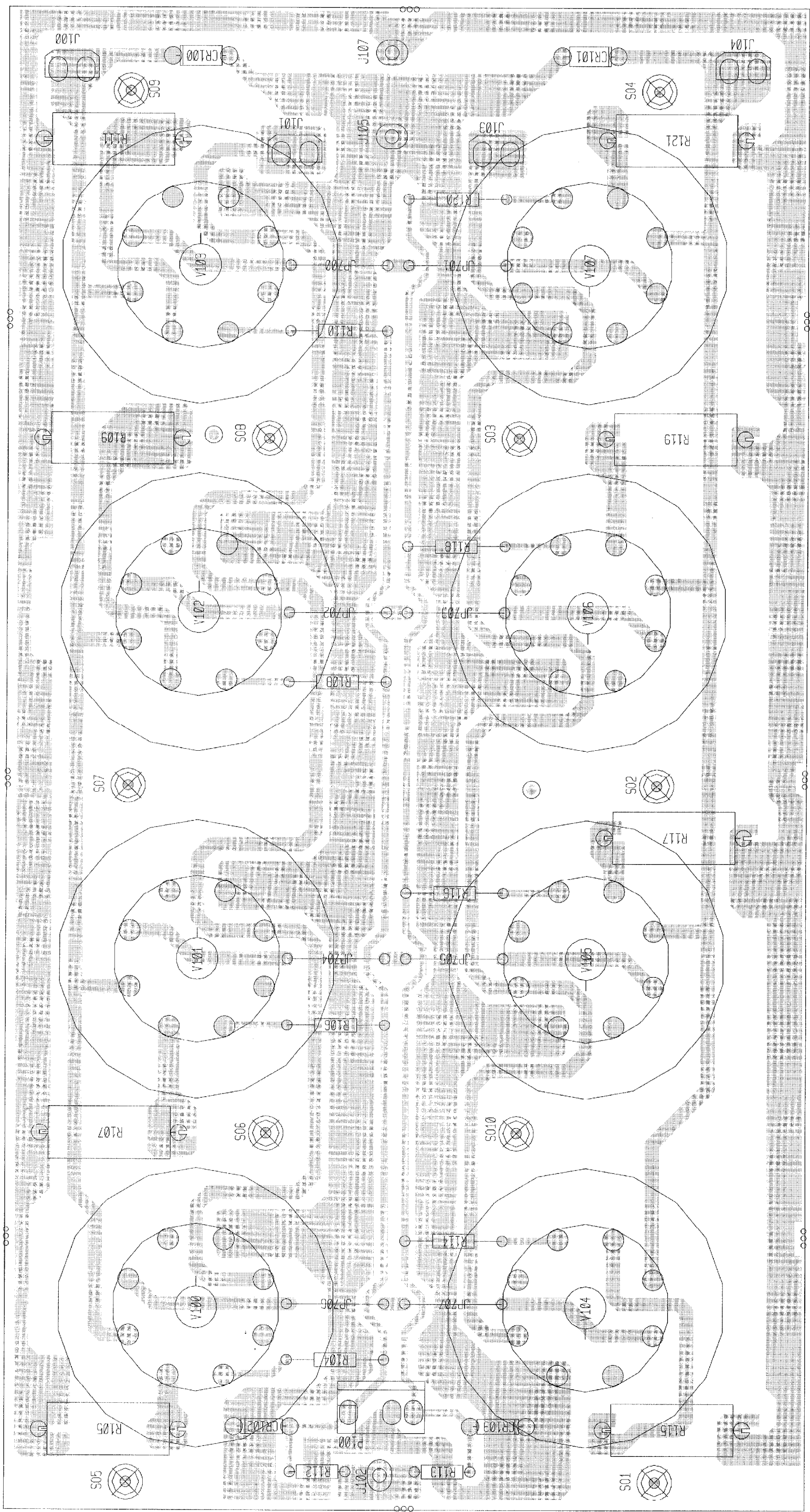
BOARD NAME: CL400 CONTROL

** QTY. NAME	VALUE	PART	DESCRIPTION AND DEVICE DESIGNATIONS	22K	22K	70240029	22K-1/4W-5%-CF-T&R
1 .0015	100PF	70340002	.0015MF-10%-50VDC-T/C-T&R	1	100K	70240034	RL06
1 .0015	100PF	70340054	100PF-10%-50VDC-T/C-T&R	1	1M	70240039	RL07
1 .330PF	330PF	70340070	330PF-10%-50VDC-T/C-T&R	1	1M	70240025	RL11
1 .1P10	.1P10	70340101	.1MF-10%-50VDC-MON-T&R	1	2.2M	70240040	RL15
1 .15F	.15F	70330113	0.10 MFD 15% 100V STCK FILM T&A	1	1M	70240039	RL20
1 .047	.047	70340017	.047MF-10%-50VDC-MON-T&R	1	1M	70240025	RL21
1 .39PF	39PF	70340052	39PF-10%-50VDC-T/C-T&R	2	240K	70241094	RL23
1 .470PF	470PF	70340058	470PF-10%-50VDC-T/C-T&R	1	1M	70240039	RL24
1 .270PF	270PF	70340057	270PF-10%-50VDC-T/C-T&R	1	10K	70240025	RL25, RL26
1 .180PF	180PF	70340056	180PF-10%-50VDC-T/C-T&R	1	10K	70240025	RL27
1 .100PF	100PF	70340054	100PF-10%-50VDC-T/C-T&R	1	220K	70240036	RL28
1 .001	.001	70340000	.001MF-10%-50VDC-MON-T&R	1	100K	70240034	RL29
1 .0015	.0015	70340002	.0015MF-10%-50VDC-T/C-T&R	2	2.2K	70240020	RL31
1 .470PF	470PF	70340058	470PF-10%-50VDC-T/C-T&R	4	2.2M	70240040	RL34
1 .001	.001	70340000	.001MF-10%-50VDC-MON-T&R	1	100K	70240034	RL39, RL60
1 .022	.022	70340012	.022MF-10%-50VDC-MON-T&R	1	22K	70240029	RL59, RL62, RL65, RL64
1 .01	.01	70340011	.01MF-10%-50VDC-T/C-T&R	1	10K	70240025	R223
1 .0068	.0068	70340008	.0068MF-10%-50VDC-MON-T&R	1	10K	70240025	10K-1/4W-5%-CF-T&R
2 .0047	.0047	70340007	.0047MF-10%-50VDC-MON-T&R	3	SUZPP	71322251	R231
1 .01	.01	70340011	.01MF-10%-50VDC-T/C-T&R	1	SW2322	71322322	R249
1 .0022	.0022	70340004	.0022MF-10%-50VDC-T/C-T&R	6	SUZPP	71322251	1K-1/4W-5%-CF-T&R
1 .015	.015	70340010	.015MF-10%-50VDC-T/C-T&R	1	POT0339	71190339	R257
1 .22A25	22A25	70320012	22MFD +/-20% 25VDC EL AXL	1	POT0303	71190303	SUZ P/P SWITCH PC MOUNT
1 .033	.033	70340014	.033MF-10%-50VDC-MON-T&R	1	POT0311	71190311	S109, S107, S102
1 LEDG2	LEDG2	70450578	SE-8721-D-GN-25MM LDS RECT	1	POT0337	71190337	SWITCH, 2P4T PC MT ROVARY SW
2 LEDYL2	LEDYL2	70450579	SE-8731-D-YEL-25MM LDS REC	1	POT0339	71190339	S103
1 HTDM1	71465214	71466214	2 TIP HUD JACK NINS W/SPD	1	POT0303	71190303	SUZ P/P SWITCH PC MOUNT
1 SPX8K7	SPX8K7	XXXXXXX	J100	1	POT0311	71190311	S104, S105, S106, S107, S108, S200
3 SPX4	SPX4	XXXXXXX	7 EACH OF STAKE PINS	2	POT0339	71190339	VR130
1 SPX6D	SPX6D	XXXXXXX	4 EACH OF STAKE PINS	2	POT0311	71190311	VR191
2 SPX4	SPX4	XXXXXXX	P105, P106	1	POT0337	71190337	VR192
1 SPX2D	SPX2D	XXXXXXX	2 EACH OF STAKE PINS	1	POT0339	71190339	VR193
1 .47K	.47K	70240031	47K-1/4W-5%-CF-T&R	1	POT0336	71190336	VR194



NOTICE: THIS CIRCUITRY IS PROTECTED BY U.S. PATENT NO. 5,197,102 OWNED BY PEAVEY ELECTRONICS CORP. USE OR COPYING WITHOUT EXPRESS WRITTEN AUTHORITY FROM PEAVEY IS STRICTLY FORBIDDEN AND VIOLATORS WILL BE PROSECUTED TO THE FULLEST EXTENT ALLOWED UNDER U.S. PATENT LAWS.

TITLE		PEAVEY ELECTRONICS CORP. 711 A STREET MERIDIAN, MISSISSIPPI 39301	
SIZE	CODE	NUMBER	REV
C		#81511050	A
PRINT	DATE	7-MAR-96	SHEET 1 OF 1



CLASSIC 400 POWER

```

BOARD NAME: CL400 POWER
** QTY. PART NAME VALUE PART NUMBER DESCRIPTION AND DEVICE DESIGNATIONS *****
*****
  2 SR2873 SR2873 70402873 SR2873 2KV, 250MA SILICON DIODE
    CR100, CR101
  2 1N4003 1N4003 70464003 1N4003 200V SILICON DIODE
    CR102, CR103
  2 SPDD 73716194 73716194 .250 PC MNT SPADE .093 PCB
    J100, J101
  1 MMPD 73711812 73711812 R93-12 PN C.B. MALE MOLEX PIN
    J102
  2 SPDD 73716194 73716194 .250 PC MNT SPADE .093 PCB
    J103, J104
  2 MMPD 73711812 73711812 R93-12 PN C.B. MALE MOLEX PIN
    J105, J107
  1 SPX4K2D SPX4K2D XXXXXXXX 3 EACH OF STAKE PINS
    P100
  1 10K 10K 70240025 10K-1/4W-5%-CF-T&R
    R104
  1 15W5 15W5 70241097 15-5W-10%-WW-AXL
    R105
  1 10K 10K 70240025 10K-1/4W-5%-CF-T&R
    R106
  1 15W5 15W5 70241097 15-5W-10%-WW-AXL
    R107
  1 10K 10K 70240025 10K-1/4W-5%-CF-T&R
    R108
  1 15W5 15W5 70241097 15-5W-10%-WW-AXL
    R109
  1 10K 10K 70240025 10K-1/4W-5%-CF-T&R
    R110
  1 15W5 15W5 70241097 15-5W-10%-WW-AXL
    R111
  2 47K 47K 70240031 47K-1/4W-5%-CF-T&R
    R112, R113
  1 10K 10K 70240025 10K-1/4W-5%-CF-T&R
    R114
  1 15W5 15W5 70241097 15-5W-10%-WW-AXL
    R115
  1 10K 10K 70240025 10K-1/4W-5%-CF-T&R
    R116
  1 15W5 15W5 70241097 15-5W-10%-WW-AXL
    R117
  1 10K 10K 70240025 10K-1/4W-5%-CF-T&R
    R118
  1 15W5 15W5 70241097 15-5W-10%-WW-AXL
    R119
  1 10K 10K 70240025 10K-1/4W-5%-CF-T&R
    R120
  1 15W5 15W5 70241097 15-5W-10%-WW-AXL
    R121
  10 375SOWU 70900295 70900295 SPACER, 3/8,R(#4),.187 SWAGE ALUM.
    SO1, SO2, SO3, SO4, SO5, SO6, SO7, SO8,
    SO9, SO10
  8 6550 6550 70806605 6550 VACUUM TUBE W/70806621 SOCKET
    V100, V101, V102, V103, V104, V105,
    V106, V107
*****

```